

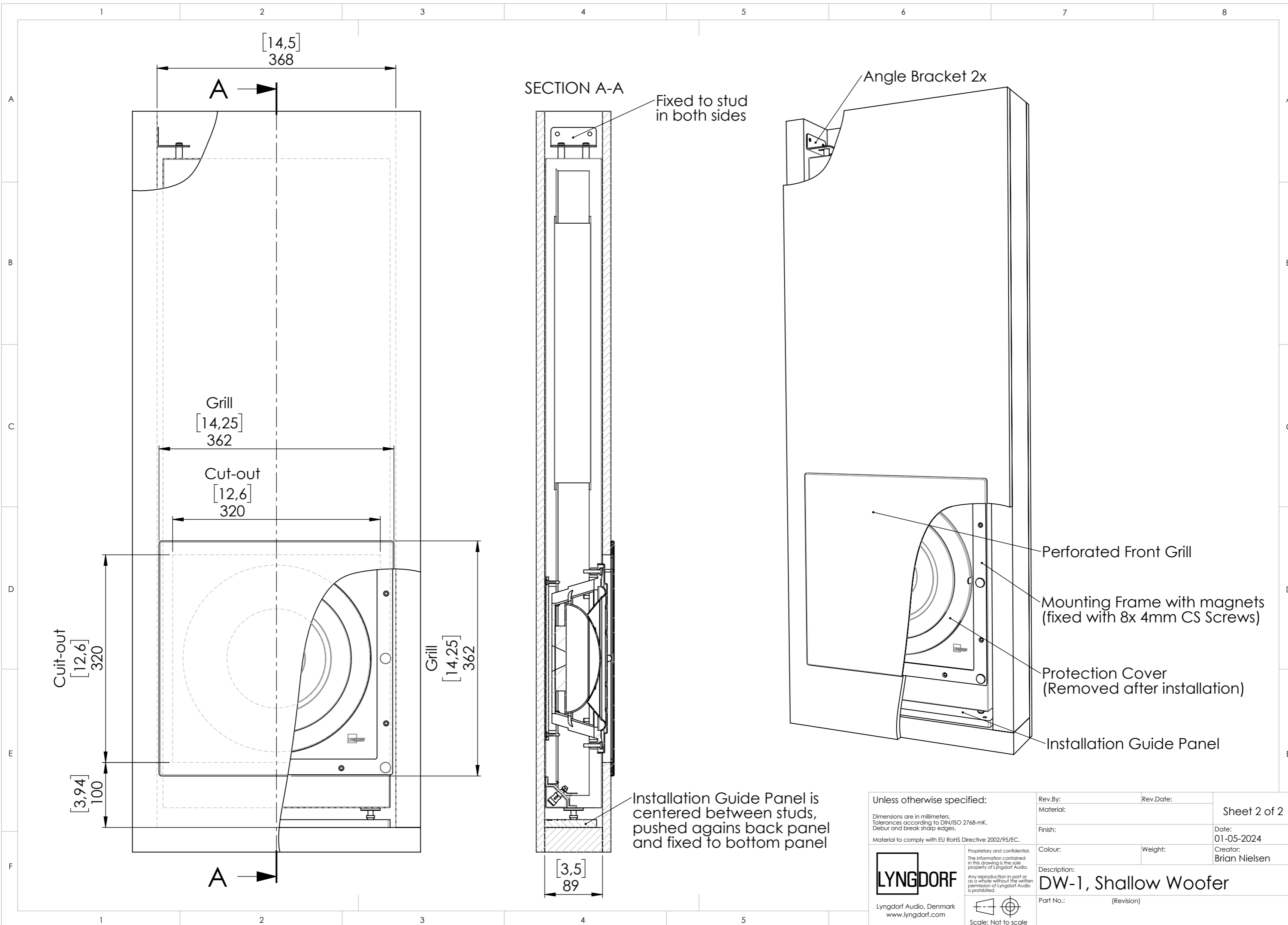


Unless otherwise specified:		Rev.By:	Rev.Date:	Sheet 1 of 2
Dimensions are in millimeters. Tolerances according to DIN/ISO 2768-mK. Debur and break sharp edges.		Material:		
Material to comply with EU RoHS Directive 2002/95/EC.		Finish:		Date: 01-05-2024
 Lyngdorf Audio, Denmark www.lyngdorf.com	Proprietary and confidential. The information contained in this drawing is the sole property of Lyngdorf Audio.		Colour:	Creator: Brian Nielsen
	Any reproduction in part or as a whole without the written permission of Lyngdorf Audio is prohibited.		Weight:	Description: DW-1, Shallow Woofer
 Scale: Not to scale		Part No.:	(Revision)	



SECTION A-A
Fixed to stud in both sides

Angle Bracket 2x

Perforated Front Grill
Mounting Frame with magnets
(fixed with 8x 4mm CS Screws)
Protection Cover
(Removed after installation)
Installation Guide Panel

Installation Guide Panel is centered between studs, pushed against back panel and fixed to bottom panel

Unless otherwise specified:

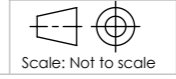
Dimensions are in millimeters.
Tolerances according to DIN/ISO 2768-mK.
Debur and break sharp edges.

Material to comply with EU RoHS Directive 2002/95/EC.



Lyngdorf Audio, Denmark
www.lyngdorf.com

Proprietary and confidential.
The information contained in this drawing is the sole property of Lyngdorf Audio.
Any reproduction in part or as a whole without the written permission of Lyngdorf Audio is prohibited.



Rev.By:	Rev.Date:	Sheet 2 of 2
Material:		
Finish:	Date:	01-05-2024
Colour:	Weight:	Creator: Brian Nielsen
Description:	DW-1, Shallow Woofer	
Part No.:	(Revision)	