

Unless otherwise specified:

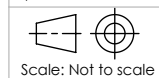
Dimensions are in millimeters.
Tolerances according to DIN/ISO 2768-mK.
Debur and break sharp edges.

Material to comply with EU RoHS Directive 2002/95/EC.

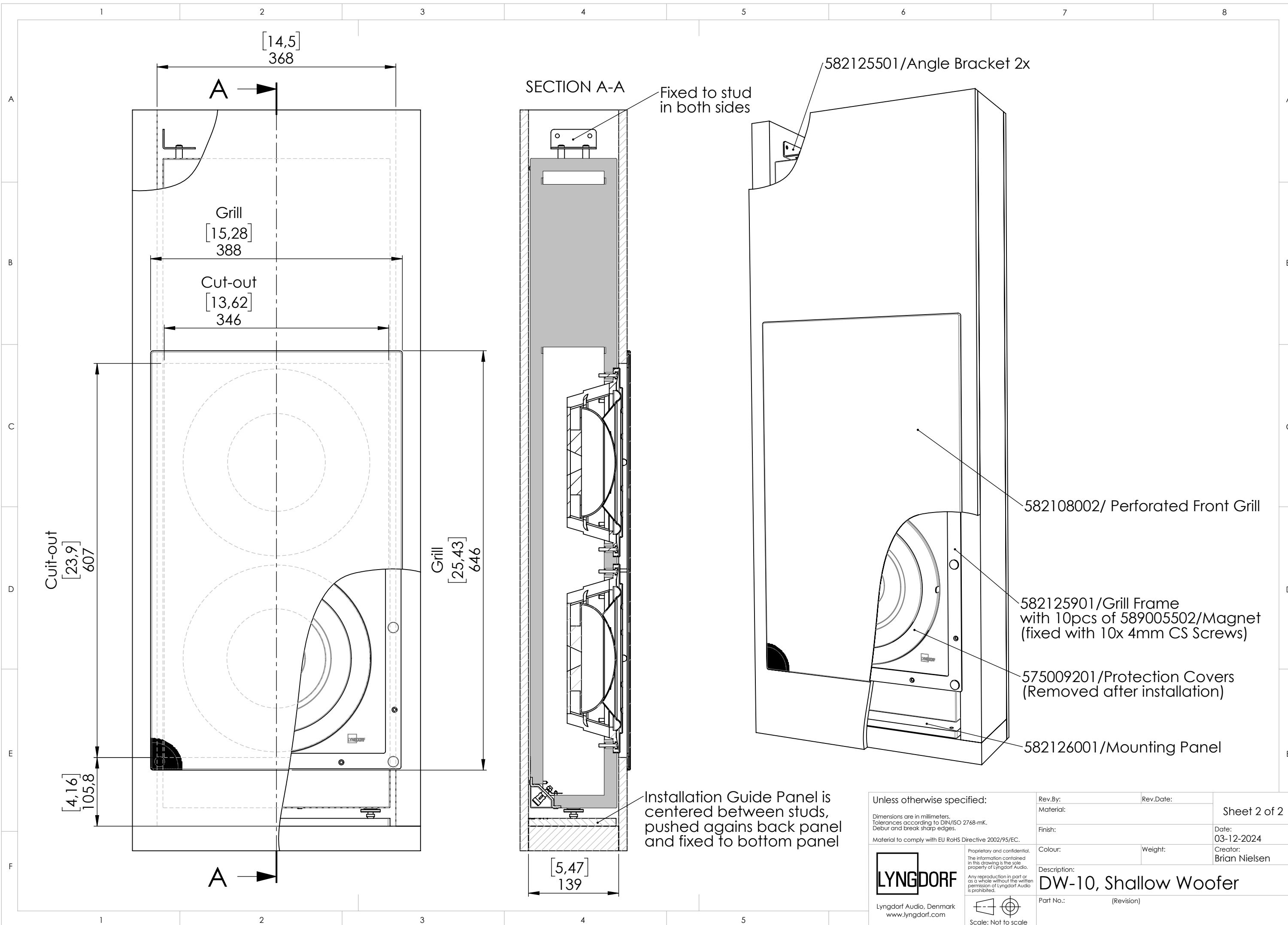


Lyngdorf Audio, Denmark
www.lyngdorf.com

Proprietary and confidential.
The information contained
in this drawing is the sole
property of Lyngdorf Audio.
Any reproduction in part or
as a whole without the written
permission of Lyngdorf Audio
is prohibited.



Rev.By:	Rev.Date:	Sheet 1 of 2
Material:		
Finish:		Date: 03-12-2024
Colour:	Weight:	Creator: Brian Nielsen
Description: DW-10, Shallow Woofer		
Part No.:	(Revision)	



Cut-out
[23,9]
607

[14,5]
368

Grill
[15,28]
388

Cut-out
[13,62]
346

Grill
[25,43]
646

[4,16]
105,8

[5,47]
139

SECTION A-A

Fixed to stud
in both sides

582125501/Angle Bracket 2x

582108002/ Perforated Front Grill

582125901/Grill Frame
with 10pcs of 589005502/Magnet
(fixed with 10x 4mm CS Screws)

575009201/Protection Covers
(Removed after installation)

582126001/Mounting Panel

Installation Guide Panel is
centered between studs,
pushed against back panel
and fixed to bottom panel

Unless otherwise specified:

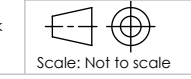
Dimensions are in millimeters.
Tolerances according to DIN/ISO 2768-mK.
Debur and break sharp edges.

Material to comply with EU RoHS Directive 2002/95/EC.



Lyngdorf Audio, Denmark
www.lyngdorf.com

Proprietary and confidential.
The information contained
in this drawing is the sole
property of Lyngdorf Audio.
Any reproduction in part or
as a whole without the written
permission of Lyngdorf Audio
is prohibited.



Rev.By:	Rev.Date:	Sheet 2 of 2
Material:	Finish:	
Colour:	Weight:	Date: 03-12-2024
Description:	Part No.:	Creator: Brian Nielsen
DW-10, Shallow Woofer		(Revision)